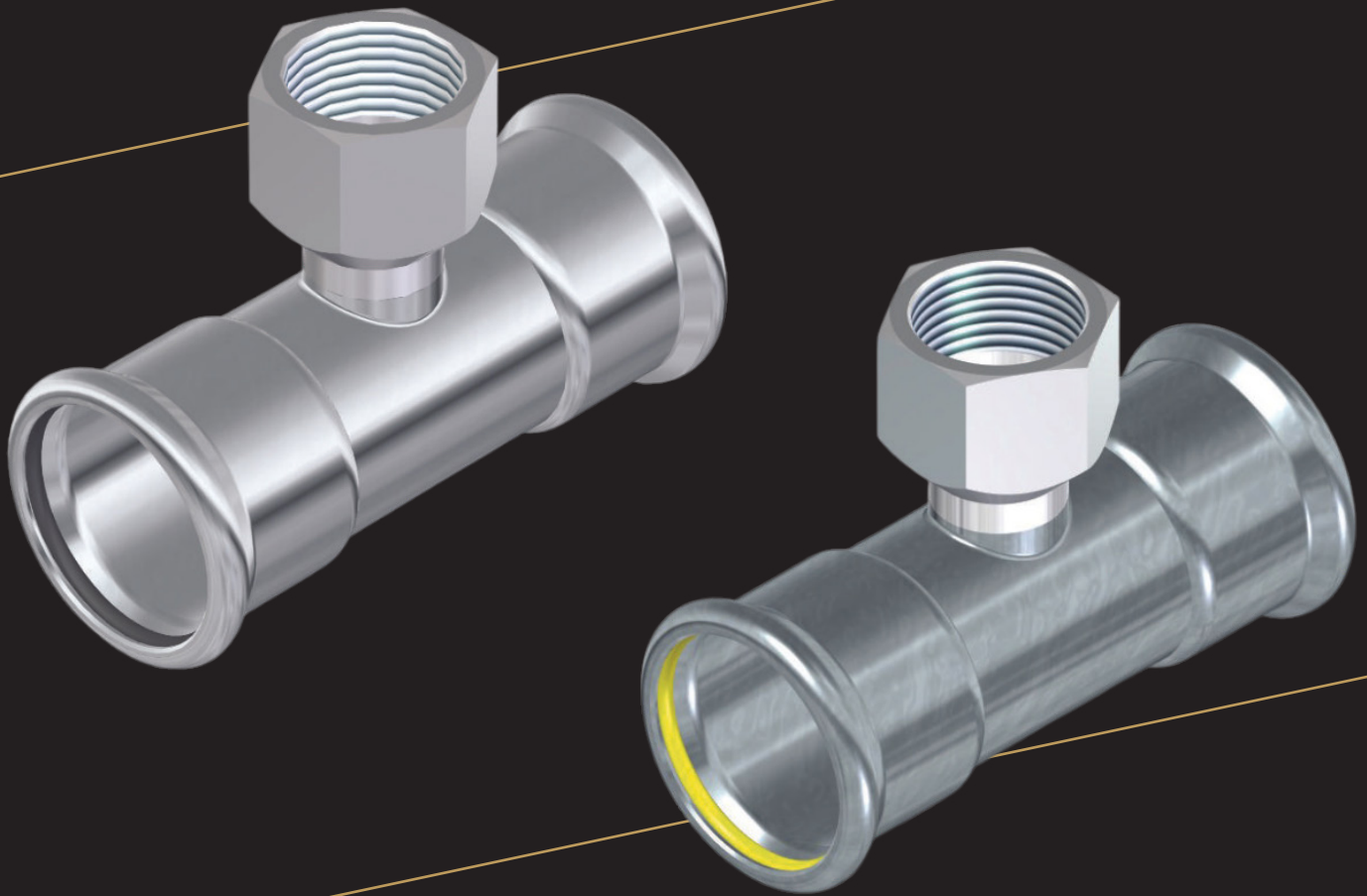




Instantor[®]

Stainless Steel Press



Superior Plumbing Products
Manufactured by Sanbra Fyffe

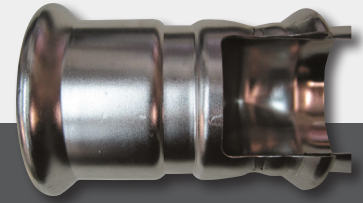
www.instantor.ie





Instantor[®]

Stainless Steel Press



Product Overview

DVGW certified, BSI Kitemark Certified and WRAS approved. INSTANTOR[®] Stainless Steel Press fittings and pipe are manufactured using 316L Stainless Steel.

Every fitting features an O-ring on each connection which, when pressed correctly, delivers a water-tight seal in seconds.

Quick to install in five simple steps – Cut, Calibrate, Check O-ring, Mark Insertion Depth & Press.

INSTANTOR[®] Stainless Steel Press fittings and tube are designed for use in potable water, water based heating, saturated steam, solar, sprinkler, compressed air, gas supply, fire protection, and industry applications.

Water Applications (EPDM O-ring)

Max Operating Pressure: 16 bar
Operating Temperature: -20°C to +110°C

Gas Applications (HNBR O-ring)

Max Operating Pressure: 5 bar
Operating Temperature: -20°C to +70°C

Oil, Solar, Hydrocarbon & Compressed Air Applications (FKM Green O-ring)

Max Operating Pressure: 16 bar
Operating Temperature: -20°C to +200°C

Saturated Steam Applications (FKM Red O-ring)

Max Operating Pressure: 7 bar
Operating Temperature: -10°C to +160°C

Features

- Stainless Steel body manufactured from no. 1.4404 (AISI 316L).
- Suitable for use with the following tubes:
 - Stainless steel tubes to EN10312 - Welded Stainless Steel Tubes for the conveyance of aqueous liquids including water for human consumption
 - Stainless steel tubes comply with DVGW
- M-Profile Press Jaws
Metric range in sizes 15, 22, 28, 35, 42 & 54mm
- Aesthetic, hygienic appearance as demonstrated in many food & pharmaceutical industry applications.
- Minimum load loss, resulting in faster fluid flows.
- Excellent decorative finish avoiding need for additional painting or external protection costs.
- Corrosion resistance, fire & heat resistance, and impact resistance.
- Sustainable and offers long term value.
- EPDM O-rings (black) Ethylene rubber -20°C to +110°C
Suitable for use in the following applications:
 - Hot & cold potable water systems
 - Water based heating systems
 - Fire protection services
 - Compressed air (oil free)
- HNBR O-rings (yellow) Nitrile rubber -20°C to +70°C
Suitable for use in the following applications:
 - GAS MOP1 & MOP5. GT1



Installation Instructions



1 - Cut

1. **Cut Pipe** - Ensure that the fitting is the correct size for the tube being used. Cut the pipe at right angle to length using a good quality pipe cutter or rotary pipe cutter. It is important that pipe ends are clean, cut square, and the pipe is not deformed.

High speed grinding wheels are not suitable.



2 - Calibrate

2. **Calibrate** - All burrs and sharp edges should be removed. Using a de-burring tool to both the inside and outside of the pipe, leaving an external chamfer. Wipe the pipe end clean. The pipe ends should be free from scratches or scores for a distance not less than the socket depth.

NOTE: A poorly calibrated pipe could damage the O-ring on insertion.



3 - Check

3. **Check O-Ring** - Before inserting the pipe, check the O-ring is seated, lubricated and free from damage.

(Re-moisten O-ring with water if necessary. Do not use oil or grease.**)



4 - Mark

4. **Mark Insertion Depth** - Insert the pipe fully into the socket of the fitting until it hits the pipe stop (or until pipes meet in the middle in fittings without a pipe stop). Mark the insertion depth with black marker to ensure the pipe has been fully inserted before pressing.

External Tube Diameter (mm)	Min Distance Between Fittings (mm)	Depth of Insertion (mm)
15 x 0.6	10	20
22 x 0.7	10	21
28 x 0.8	10	23
35 x 1.0	10	26
42 x 1.2	20	30
54 x 1.2	20	35



5 - Press

5. **Press** - Making sure to select the correct profile Jaw ('M' for metric Instantor Stainless Steel Press), execute the press cycle. After the press tool cycle is complete, remove the Press Jaws and check that the socket depth marking on the pipe has remained in place, adjacent to the mouth of the fitting.

NOTE: ** Fittings should be kept in original packaging to protect the O-ring and prevent drying out of lubrication.

Water Fittings

SP410 STRAIGHT COUPLER

CODE	SIZE	PACK QTY	PRICE €
SP410001	15mm	20	
SP410002	22mm	20	
SP410003	28mm	20	
SP410004	35mm	10	
SP410005	42mm	4	
SP410006	54mm	4	

Large sizes also available. Please contact our sales team for more information.



SP410 STRAIGHT SLIP COUPLER

CODE	SIZE	PACK QTY	PRICE €
SP4100S1	15mm	20	
SP4100S2	22mm	20	
SP4100S3	28mm	20	
SP4100S4	35mm	10	
SP4100S5	42mm	4	
SP4100S6	54mm	4	

Large sizes also available. Please contact our sales team for more information.



SP415 90° F.I. X F.I. ELBOW

CODE	SIZE	PACK QTY	PRICE €
SP415001	15mm	20	
SP415002	22mm	20	
SP415003	28mm	20	
SP415004	35mm	10	
SP415005	42mm	4	
SP415006	54mm	2	

Large sizes also available. Please contact our sales team for more information.



SP435 90° M.I. X F.I. ELBOW

CODE	SIZE	PACK QTY	PRICE €
SP435001	15mm	20	
SP435002	22mm	20	
SP435003	28mm	10	
SP435004	35mm	10	
SP435005	42mm	4	
SP435006	54mm	2	

Large sizes also available. Please contact our sales team for more information.



SP445 45° F.I. X F.I. ELBOW

CODE	SIZE	PACK QTY	PRICE €
SP445001	15mm	20	
SP445002	22mm	20	
SP445003	28mm	10	
SP445004	35mm	10	
SP445005	42mm	4	
SP445006	54mm	2	

Large sizes also available. Please contact our sales team for more information.



SP425 45° M.I. X F.I. ELBOW

CODE	SIZE	PACK QTY	PRICE €
SP425001	15mm	20	
SP425002	22mm	20	
SP425003	28mm	10	
SP425004	35mm	10	
SP425005	42mm	4	
SP425006	54mm	2	



Large sizes also available. Please contact our sales team for more information.

SP430 TEE PRESS X PRESS X F.I. IRON

CODE	SIZE	PACK QTY	PRICE €
SP430001	15mm x 15mm x 1/2" FI	20	
SP430221	22mm x 22mm x 1/2" FI	20	
SP430002	22mm x 22mm x 3/4" FI	20	
SP430331	28mm x 28mm x 1/2" FI	10	
SP430332	28mm x 28mm x 3/4" FI	10	
SP430003	28mm x 28mm x 1" FI	10	
SP430441	35mm x 35mm x 1/2" FI	10	
SP430442	35mm x 35mm x 3/4" FI	10	
SP430443	35mm x 35mm x 1" FI	10	
SP430004	35mm x 35mm x 1 1/4" FI	10	
SP430551	42mm x 42mm x 1/2" FI	4	
SP430552	42mm x 42mm x 3/4" FI	4	
SP430553	42mm x 42mm x 1" FI	4	
SP430005	42mm x 42mm x 1 1/2" FI	4	
SP430661	54mm x 54mm x 1/2" FI	2	
SP430662	54mm x 54mm x 3/4" FI	2	
SP430663	54mm x 54mm x 1" FI	2	
SP430006	54mm x 54mm x 2" FI	2	



Large sizes also available. Please contact our sales team for more information.

SP419 M.I. X F.I. REDUCER

CODE	SIZE	PACK QTY	PRICE €
SP419021	22mm x 15mm	20	
SP419031	28mm x 15mm	20	
SP419032	28mm x 22mm	20	
SP419041	35mm x 15mm	10	
SP419042	35mm x 22mm	10	
SP419043	35mm x 28mm	10	
SP419051	42mm x 15mm	4	
SP419052	42mm x 22mm	4	
SP419053	42mm x 28mm	4	
SP419054	42mm x 35mm	4	
SP419061	54mm x 15mm	4	
SP419062	54mm x 22mm	4	
SP419063	54mm x 28mm	4	
SP419064	54mm x 35mm	4	
SP419065	54mm x 42mm	4	



Large sizes also available. Please contact our sales team for more information.

SP418 REDUCING TEE

CODE	SIZE	PACK QTY	PRICE €
SP418221	22mm x 22mm x 15mm	20	
SP418331	28mm x 28mm x 15mm	10	
SP418332	28mm x 28mm x 22mm	10	
SP418441	35mm x 35mm x 15mm	10	
SP418442	35mm x 35mm x 22mm	10	
SP418443	35mm x 35mm x 28mm	10	
SP418551	42mm x 42mm x 15mm	4	
SP418552	42mm x 42mm x 22mm	4	
SP418553	42mm x 42mm x 28mm	4	
SP418554	42mm x 42mm x 35mm	4	
SP418661	54mm x 54mm x 15mm	2	
SP418662	54mm x 54mm x 22mm	2	
SP418663	54mm x 54mm x 28mm	2	
SP418664	54mm x 54mm x 35mm	2	
SP418665	54mm x 54mm x 42mm	2	



Large sizes also available. Please contact our sales team for more information.

SP418 EQUAL TEE

CODE	SIZE	PACK QTY	PRICE €
SP418001	15mm	20	
SP418002	22mm	20	
SP418003	28mm	10	
SP418004	35mm	10	
SP418005	42mm	4	
SP418006	54mm	2	

Large sizes also available. Please contact our sales team for more information.



SP412 FEMALE ADAPTOR

CODE	SIZE	PACK QTY	PRICE €
SP412001	15mm x 1/2" FI	20	
SP412012	15mm x 3/4" FI	20	
SP412021	22mm x 1/2" FI	20	
SP412002	22mm x 3/4" FI	20	
SP412023	22mm x 1" FI	20	
SP412032	28mm x 3/4" FI	20	
SP412003	28mm x 1" FI	20	
SP412034	28mm x 1 1/4" FI	20	
SP412043	35mm x 1" FI	10	
SP412004	35mm x 1 1/4" FI	10	
SP412045	35mm x 1 1/2" FI	10	
SP412054	42mm x 1 1/4" FI	4	
SP412005	42mm x 1 1/2" FI	4	
SP412065	54mm x 1 1/2" FI	4	
SP412006	54mm x 2" FI	4	

Large sizes also available. Please contact our sales team for more information.



SP411 MALE ADAPTOR

CODE	SIZE	PACK QTY	PRICE €
SP411001	15mm x 1/2" MI	20	
SP411012	15mm x 3/4" MI	20	
SP411021	22mm x 1/2" MI	20	
SP411002	22mm x 3/4" MI	20	
SP411023	22mm x 1" MI	20	
SP411032	28mm x 3/4" MI	20	
SP411003	28mm x 1" MI	20	
SP411034	28mm x 1 1/4" MI	20	
SP411043	35mm x 1" MI	10	
SP411004	35mm x 1 1/4" MI	10	
SP411045	35mm x 1 1/2" MI	10	
SP411054	42mm x 1 1/4" MI	4	
SP411005	42mm x 1 1/2" MI	4	
SP411065	54mm x 1 1/2" MI	4	
SP411006	54mm x 2" MI	4	

Large sizes also available. Please contact our sales team for more information.



SP440 FLANGE ADAPTOR PN16

CODE	SIZE	PACK QTY	PRICE €
SP440001	15mm	4	
SP440002	22mm	4	
SP440003	28mm	4	
SP440004	35mm	4	
SP440005	42mm	4	
SP440006	54mm	4	

Large sizes also available. Please contact our sales team for more information.



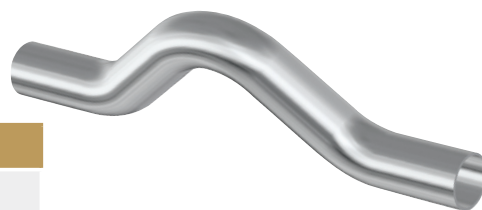
SP400 PRE-FORMED PIPE BRIDGE

CODE	SIZE	PACK QTY	PRICE €
SP400011	15mm	20	
SP400012	22mm	20	
SP400013	28mm	10	



SP400 PIPE BRIDGE

CODE	SIZE	PACK QTY	PRICE €
SP400014	15mm	20	
SP400015	22mm	20	
SP400016	28mm	10	



SP400 PRESS PIPE BRIDGE

CODE	SIZE	PACK QTY	PRICE €
SP400017	15mm	20	
SP400018	22mm	20	
SP400019	28mm	10	



SP451 STOP END

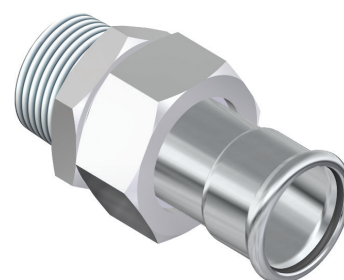
CODE	SIZE	PACK QTY	PRICE €
SP451001	15mm	20	
SP451002	22mm	10	
SP451003	28mm	10	
SP451004	35mm	10	
SP451005	42mm	4	
SP451006	54mm	4	



Large sizes also available. Please contact our sales team for more information.

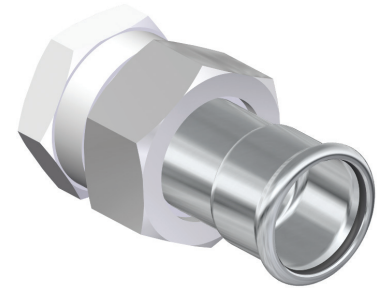
SPU11 MALE UNION CONNECTOR

CODE	SIZE	PACK QTY	PRICE €
SPU11001	15mm x 1/2" MI	20	
SPU11012	15mm x 3/4" MI	20	
SPU11023	22mm x 1" MI	20	
SPU11002	22mm x 3/4" MI	20	
SPU11003	28mm x 1" MI	20	
SPU11034	28mm x 1 1/4" MI	20	
SPU11004	35mm x 1 1/4" MI	10	
SPU11005	42mm x 1 1/2" MI	4	
SPU11006	54mm x 2" MI	2	



SPU12 FEMALE UNION CONNECTOR

CODE	SIZE	PACK QTY	PRICE €
SPU12001	15mm x ½" FI	20	
SPU12012	15mm x ¾" FI	20	
SPU12023	22mm x 1" FI	20	
SPU12002	22mm x ¾" FI	20	
SPU12003	28mm x 1" FI	20	
SPU12034	28mm x 1¼" FI	20	
SPU12004	35mm x 1¼" FI	10	
SPU12005	42mm x 1½" FI	4	
SPU12006	54mm x 2" FI	2	



ELONGATION COMPENSATOR

CODE	SIZE	PACK QTY	PRICE €
SP410111	15mm	1	
SP410112	22mm	1	
SP410113	28mm	1	
SP410114	35mm	1	
SP410115	42mm	1	
SP410116	54mm	1	



Not WRAS Approved

Large sizes also available. Please contact our sales team for more information.

Gas Fittings

SPG410 STRAIGHT COUPLER

GAS	CODE	SIZE	PACK QTY	PRICE €
	SPG410001	15mm	20	
	SPG410002	22mm	20	
	SPG410003	28mm	20	
	SPG410004	35mm	10	
	SPG410005	42mm	4	
	SPG410006	54mm	4	

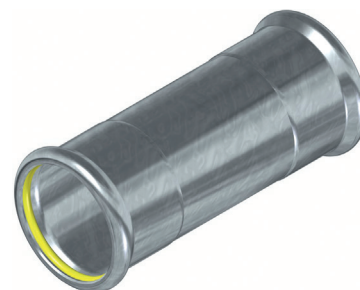
Large sizes also available. Please contact our sales team for more information.



SPG410 STRAIGHT SLIP COUPLER

GAS	CODE	SIZE	PACK QTY	PRICE €
	SPG4100S1	15mm	20	
	SPG4100S2	22mm	20	
	SPG4100S3	28mm	20	
	SPG4100S4	35mm	10	
	SPG4100S5	42mm	4	
	SPG4100S6	54mm	4	

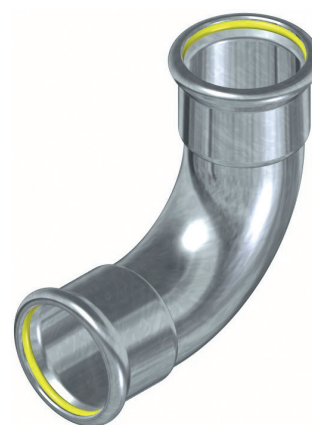
Large sizes also available. Please contact our sales team for more information.



SPG415 90° F.I. X F.I. ELBOW

GAS	CODE	SIZE	PACK QTY	PRICE €
	SPG415001	15mm	20	
	SPG415002	22mm	20	
	SPG415003	28mm	20	
	SPG415004	35mm	10	
	SPG415005	42mm	4	
	SPG415006	54mm	2	

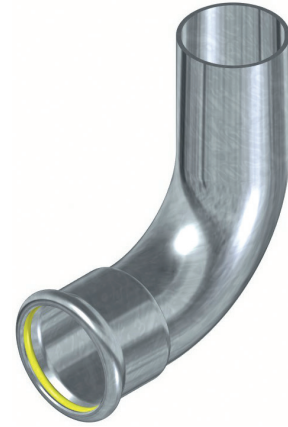
Large sizes also available. Please contact our sales team for more information.



SPG435 90° M.I. X F.I. ELBOW

GAS	CODE	SIZE	PACK QTY	PRICE €
	SPG435001	15mm	20	
	SPG435002	22mm	20	
	SPG435003	28mm	10	
	SPG435004	35mm	10	
	SPG435005	42mm	4	
	SPG435006	54mm	2	

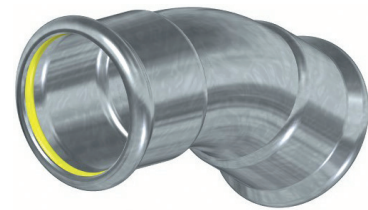
Large sizes also available. Please contact our sales team for more information.



SPG445 45° F.I. X F.I. ELBOW

GAS	CODE	SIZE	PACK QTY	PRICE €
	SPG445001	15mm	20	
	SPG445002	22mm	20	
	SPG445003	28mm	10	
	SPG445004	35mm	10	
	SPG445005	42mm	4	
	SPG445006	54mm	2	

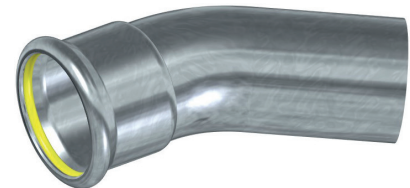
Large sizes also available. Please contact our sales team for more information.



SPG425 45° M.I. X F.I. ELBOW

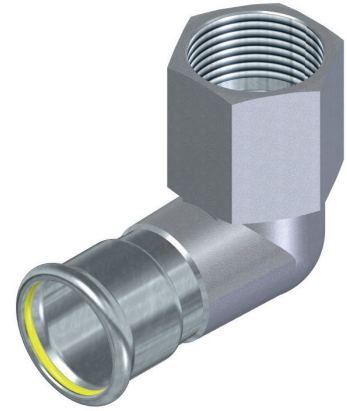
GAS	CODE	SIZE	PACK QTY	PRICE €
	SPG425001	15mm	20	
	SPG425002	22mm	20	
	SPG425003	28mm	10	
	SPG425004	35mm	10	
	SPG425005	42mm	4	
	SPG425006	54mm	2	

Large sizes also available. Please contact our sales team for more information.



SPG417 FEMALE ANGLE ADAPTOR

GAS	CODE	SIZE	PACK QTY	PRICE €
	SPG417001	15mm x ½" FI	20	
	SPG417002	22mm x ¾" FI	10	
	SPG417003	28mm x 1" FI	10	
	SPG417004	35mm x 1¼" FI	10	



VALVE CONNECTOR WITH SWIVEL

GAS	CODE	SIZE	PACK QTY	PRICE €
	SPGS12001	15mm x ½" FI	20	
	SPGS12002	22mm x ¾" FI	20	
	SPGS12003	28mm x 1" FI	10	
	SPGS12004	35mm x 1¼" FI	10	
	SPGS12005	42mm x 1½" FI	4	
	SPGS12006	54mm x 2" FI	4	



Large sizes also available. Please contact our sales team for more information.

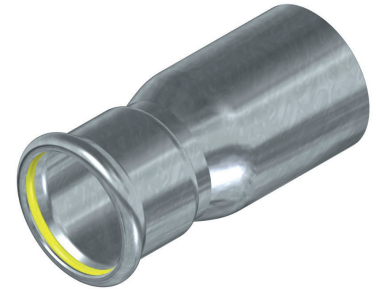
SPG430 TEE PRESS X PRESS X F.I. IRON

GAS	CODE	SIZE	PACK QTY	PRICE €
	SPG430001	15mm x 15mm x ½" FI	20	
	SPG430221	22mm x 22mm x ½" FI	20	
	SPG430002	22mm x 22mm x ¾" FI	20	
	SPG430331	28mm x 28mm x ½" FI	10	
	SPG430332	28mm x 28mm x ¾" FI	10	
	SPG430003	28mm x 28mm x 1" FI	10	
	SPG430441	35mm x 35mm x ½" FI	10	
	SPG430442	35mm x 35mm x ¾" FI	10	
	SPG430443	35mm x 35mm x 1" FI	10	
	SPG430004	35mm x 35mm x 1¼" FI	10	
	SPG430551	42mm x 42mm x ½" FI	4	
	SPG430552	42mm x 42mm x ¾" FI	4	
	SPG430553	42mm x 42mm x 1" FI	4	
	SPG430005	42mm x 42mm x 1½" FI	4	
	SPG430661	54mm x 54mm x ½" FI	2	
	SPG430662	54mm x 54mm x ¾" FI	2	
	SPG430663	54mm x 54mm x 1" FI	2	
	SPG430006	54mm x 54mm x 2" FI	2	



Large sizes also available. Please contact our sales team for more information.

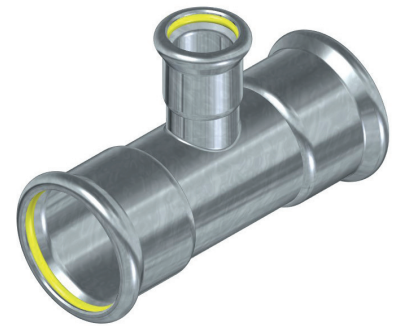
SPG419 M.I. X F.I. REDUCER



GAS	CODE	SIZE	PACK QTY	PRICE €
	SPG419021	22mm x 15mm	20	
	SPG419031	28mm x 15mm	20	
	SPG419032	28mm x 22mm	20	
	SPG419041	35mm x 15mm	10	
	SPG419042	35mm x 22mm	10	
	SPG419043	35mm x 28mm	10	
	SPG419051	42mm x 15mm	4	
	SPG419052	42mm x 22mm	4	
	SPG419053	42mm x 28mm	4	
	SPG419054	42mm x 35mm	4	
	SPG419061	54mm x 15mm	4	
	SPG419062	54mm x 22mm	4	
	SPG419063	54mm x 28mm	4	
	SPG419064	54mm x 35mm	4	
	SPG419065	54mm x 42mm	4	

Large sizes also available. Please contact our sales team for more information.

SPG418 REDUCING TEE



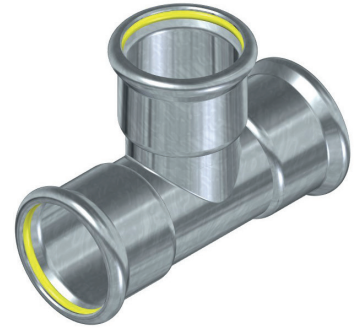
GAS	CODE	SIZE	PACK QTY	PRICE €
	SPG418221	22mm x 22mm x 15mm	20	
	SPG418331	28mm x 28mm x 15mm	10	
	SPG418332	28mm x 28mm x 22mm	10	
	SPG418441	35mm x 35mm x 15mm	10	
	SPG418442	35mm x 35mm x 22mm	10	
	SPG418443	35mm x 35mm x 28mm	10	
	SPG418551	42mm x 42mm x 15mm	4	
	SPG418552	42mm x 42mm x 22mm	4	
	SPG418553	42mm x 42mm x 28mm	4	
	SPG418554	42mm x 42mm x 35mm	4	
	SPG418661	54mm x 54mm x 15mm	2	
	SPG418662	54mm x 54mm x 22mm	2	
	SPG418663	54mm x 54mm x 28mm	2	
	SPG418664	54mm x 54mm x 35mm	2	
	SPG418665	54mm x 54mm x 42mm	2	

Large sizes also available. Please contact our sales team for more information.

SPG418 EQUAL TEE

GAS	CODE	SIZE	PACK QTY	PRICE €
	SPG418001	15mm	20	
	SPG418002	22mm	20	
	SPG418003	28mm	10	
	SPG418004	35mm	10	
	SPG418005	42mm	4	
	SPG418006	54mm	2	

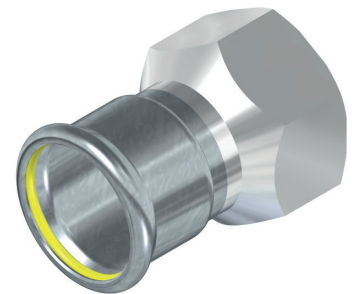
Large sizes also available. Please contact our sales team for more information.



SPG412 FEMALE ADAPTOR

GAS	CODE	SIZE	PACK QTY	PRICE €
	SPG412001	15mm x 1/2" FI	20	
	SPG412012	15mm x 3/4" FI	20	
	SPG412021	22mm x 1/2" FI	20	
	SPG412002	22mm x 3/4" FI	20	
	SPG412023	22mm x 1" FI	20	
	SPG412032	28mm x 3/4" FI	20	
	SPG412003	28mm x 1" FI	20	
	SPG412034	28mm x 1 1/4" FI	20	
	SPG412043	35mm x 1" FI	10	
	SPG412004	35mm x 1 1/4" FI	10	
	SPG412045	35mm x 1 1/2" FI	10	
	SPG412054	42mm x 1 1/4" FI	4	
	SPG412005	42mm x 1 1/2" FI	4	
	SPG412065	54mm x 1 1/2" FI	4	
	SPG412006	54mm x 2" FI	4	

Large sizes also available. Please contact our sales team for more information.



SPG411 MALE ADAPTOR

GAS	CODE	SIZE	PACK QTY	PRICE €
	SPG411001	15mm x 1/2" MI	20	
	SPG411012	15mm x 3/4" MI	20	
	SPG411021	22mm x 1/2" MI	20	
	SPG411002	22mm x 3/4" MI	20	
	SPG411023	22mm x 1" MI	20	
	SPG411032	28mm x 3/4" MI	20	
	SPG411003	28mm x 1" MI	20	
	SPG411034	28mm x 1 1/4" MI	20	
	SPG411043	35mm x 1" MI	10	
	SPG411004	35mm x 1 1/4" MI	10	
	SPG411045	35mm x 1 1/2" MI	10	
	SPG411054	42mm x 1 1/4" MI	4	
	SPG411005	42mm x 1 1/2" MI	4	
	SPG411065	54mm x 1 1/2" MI	4	
	SPG411006	54mm x 2" MI	4	



Large sizes also available. Please contact our sales team for more information.

SPG440 FLANGE ADAPTOR

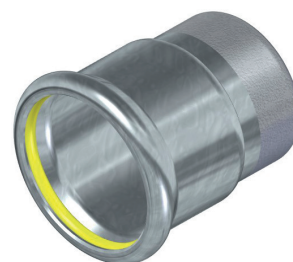
GAS	CODE	SIZE	PACK QTY	PRICE €
	SPG440001	15mm	4	
	SPG440002	22mm	4	
	SPG440003	28mm	4	
	SPG440004	35mm	4	
	SPG440005	42mm	4	
	SPG440006	54mm	4	



Large sizes also available. Please contact our sales team for more information.

SPG451 STOP END

GAS	CODE	SIZE	PACK QTY	PRICE €
	SPG451001	15mm	20	
	SPG451002	22mm	10	
	SPG451003	28mm	10	
	SPG451004	35mm	10	
	SPG451005	42mm	4	
	SPG451006	54mm	4	

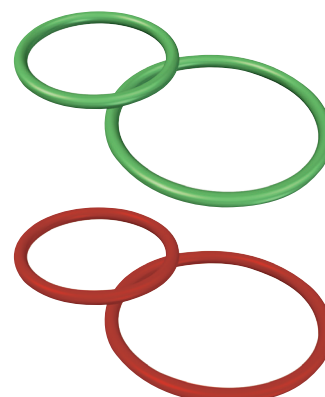


Large sizes also available. Please contact our sales team for more information.

O-Rings

FKM O-RINGS

CODE	SIZE	PACK QTY	PRICE €
SP000001	15mm (Red)	10	
SP000002	22mm (Red)	10	
SP000003	28mm (Red)	10	
SP000004	35mm (Red)	10	
SP000005	42mm (Red)	10	
SP000006	54mm (Red)	10	
SP000007	15mm (Green)	10	
SP000008	22mm (Green)	10	
SP000009	28mm (Green)	10	
SP000010	35mm (Green)	10	
SP000011	42mm (Green)	10	
SP000012	54mm (Green)	10	



Large sizes also available. Please contact our sales team for more information.

FKM O-ring (Green) Fluoroelastomer rubber

- Applications: Oils, hydrocarbons, solar, fuels, technical liquids, and compressed air (oil purity class 0-X).
- Temperature Range: -20°C to +200°C dry app (hot air) or wet app (oils or primary solar energy circuits)
- Max Pressure: 16 Bar

FKM O-ring (Red) Fluoroelastomer rubber

- Applications: Saturated steam and solar installations.
- Temperature Range: -10°C to +160°C (constant) Short peak exposure +170/180°C.
- Max Pressure: 7 Bar

Stainless Steel Pipe



PIPE LENGTHS

CODE	SIZE	BUNDLE QTY	PRICE PER LENGTH €
ISSP111	15mm x 0.6mm	80	
ISSP112	22mm x 0.7mm	61	
ISSP113	28mm x 0.8mm	44	
ISSP114	35mm x 1.0mm	44	
ISSP115	42mm x 1.2mm	44	
ISSP116	54mm x 1.2mm	37	

EN10312 & DVGW W541 certified



Instantor Press Tools

INSTANTOR 18V MINI PRESS TOOL

CODE	DESCRIPTION	PRICE €
IT2020	Instantor Mini Press Tool 18V	
IT2020MK	Instantor Mini Press Tool 18V Kit includes 15, 22 & 28mm M Jaws	



INSTANTOR 18V LARGE PRESS TOOL

CODE	DESCRIPTION	PRICE €
IT2040	Instantor Large Press Tool 18V	
IT2040MK	Instantor Large Press Tool 18V Kit includes 35, 42, 54mm M Jaws & Adaptor Tongs (Required for 42 & 54mm Jaws)	



FEATURES

- Suitable for thin wall stainless steel pipe, copper pipe or multi-layer pipe.
- Available for all common systems;
 - TH Profile (16mm – 63mm),
 - VI Profile (1/2" – 1") &
 - M Profile (15mm – 54mm).
- High performance 18V 4.0Ah LI-ION battery.
- Ergonomically designed with non-slip rubber grips, carry strap, and optimised centre of gravity for easy, single-handed operation.
- OLED display shows your press count, battery power, working pressure, maintenance notes, and fault codes.
- 3-year manufacturers warranty, when registered online.
- Service and calibration available through a qualified Instantor Service Technician in our newly established Instantor Service Centre located in Dublin 9. Calibration Certificate provided once complete.

PRESS TOOL KIT

- Instantor 18V Press Tool
- Heavy duty plastic protective case
- 2 x 18V 4Ah batteries
- Charger
- Jaws of choice (VI, TH or M Profile)

INSTANTOR PRESS JAWS

CODE	DESCRIPTION	PRICE €
IT20030	Instantor 15mm M Jaws	
IT20031	Instantor 22mm M Jaws	
IT20032	Instantor 28mm M Jaws	
IT20033	Instantor 35mm M Jaws	
IT20034	Instantor 42mm M Jaws	
IT20035	Instantor 54mm M Jaws	



ADDITIONAL ITEMS

CODE	DESCRIPTION	PRICE €
IT20042	Instantor 4.0Ah Battery	
IT20029	Instantor Adaptor TH50 / TH63 / M42 / M54	
IT20050	Instantor Press Jaw Case	





Instantor[®]

Tools

AVAILABLE FOR ALL COMMON SYSTEMS

TH Profile - 16mm - 63mm

VI Profile - 1/2" - 1"

M Profile - 15mm - 54mm

ROTATING HEAD



LED LIGHT (IT2040 Only)

MANUAL RETRACT IF NEEDED

Service & Calibration

Available through a qualified
Instantor Service Technician in our
newly established Instantor
Service Centre located in Dublin 9.
T: 01 842 6255

2 Year Warranty



Scan to register your press tool and receive an **extended warranty of 1 year!**



OLED DISPLAY
Press Count
Battery Power
Working Pressure
Maintenance Notes
Fault Codes



ERGONOMICALLY DESIGNED

Overall Compact Design
Non-Slip Rubber Grips
Carry strap included
Optimised centre of gravity for easy and single handed operation

HIGH PERFORMANCE 18V 4.0Ah LI-ION BATTERY

Kits include 2 x batteries


Superior Plumbing Products Manufactured by Sanbra Fyffe



Instantor[®]

Stainless Steel Press

Certification



This certifies that

SANBRA FYFFE LTD.

has had the undermentioned product(s) examined, tested and certified as being of an appropriate quality and standard as required in the Water Supply (Water Fittings) Regulations and Scottish Water Byelaws, subject to scheme requirements being met when installed.

Model Numbers


INSTANTOR RANGE OF STAINLESS STEEL CRIMP FITTINGS AND STAINLESS STEEL TUBE (FOR MODELS AND SIZES COVERED BY THE SCOPE OF THIS APPROVAL PLEASE CONSULT THE WRAS ONLINE DIRECTORY AND/OR THE ACCOMPANYING APPROVAL LETTER).

The certificate by itself is not evidence of a valid WRAS Approval. Confirmation of the current status of an approval must be obtained from the WRAS Approvals Directory (www.wras.co.uk/directory)


The product so mentioned will be valid until the end of:

November 2025

Certificate No.
2011112



Ian Hughes,
WRAS Approvals Manager



Certificate of Registration of Environmental Management System to I.S. EN ISO 14001:2015

Sanbra Fyffe Ltd (Instantor)
Instantor Works
Santry Avenue
Santry
Dublin 9
Ireland
D09K160

NSAI certifies that the aforementioned company has been assessed and deemed to comply with the provisions of the standard referred to above in respect of:-


The supply of brassware compression fittings & the distribution of plumbing & heating equipment



Registration Number: 14-5368
Original Registration: 14 July 2015
Last Renewed on: 13 July 2022
Valid From: 13 June 2022
Remains valid to: 14 July 2024

NSAI National Standards Authority of Ireland, 15-17 Spire, Northwood, Santry, Dublin 9, Ireland T +353 (0)1 807 8800 F +353 (0)1 807 8801 www.nsa.ie

CERT-161 WH-14001:2015 INAB (3)




Certificate of Registration of Quality Management System to I.S. EN ISO 9001:2015

Sanbra Fyffe Ltd (Instantor)
Instantor Works
Santry Avenue
Santry
Dublin 9
Ireland

NSAI certifies that the aforementioned company has been assessed and deemed to comply with the provisions of the standard referred to above in respect of:-

The supply of brassware compression fittings and the distribution of plumbing and heating equipment.



Registration Number: 14-5370
Original Registration: 13 February 2012
Last Renewed on: 18 August 2022
Valid From: 2 October 2020
Remains valid to: 2 October 2023

NSAI National Standards Authority of Ireland, 15-17 Spire, Northwood, Santry, Dublin 9, Ireland T +353 (0)1 807 8800 F +353 (0)1 807 8801 www.nsa.ie

CERT-155 WH-9001:2015 INAB (3)

T 01 842 6255 E sales@instantor.ie www.instantor.ie

Sanbra Fyffe Ltd. trading as Instantor
Instantor Works, Santry Avenue, Santry, Dublin D09 K160



Make the connection with us socially

Issue 1 - Sep 2022 - Unpriced